



**Providing Solutions  
since 1966.**

## Our mission

Specialty Structures & Installations was founded to assist architects, developers and General Contractors in selecting the best products for their projects.

We have a working relationship with many suppliers of different kinds of structural systems, made of every possible material.

We are here to provide solutions.

*Bernd Rennebeck*

+1 407 492 4523  
[www.spstin.com](http://www.spstin.com)

Visit us



# THE GLASSHOUSE

MASTERS OF GLASS SINCE 1984



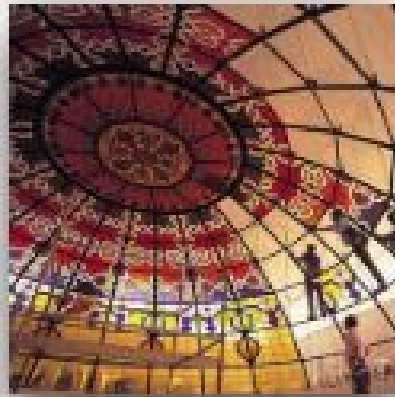
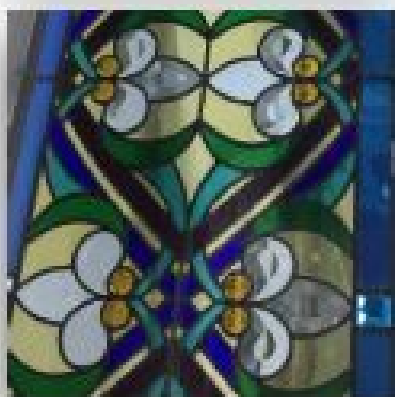
# OUR RANGE OF PRODUCTS

## STAINED GLASS



We continue this ancient craft using truly traditional methods. The quality of our craftsmanship is second to none, based on many years of experience, and exceptional choice of glass.

Glasshouse has won international competitions for projects in palaces all over the middle East and beyond, as well as many private residences, hotels and commercial premises.



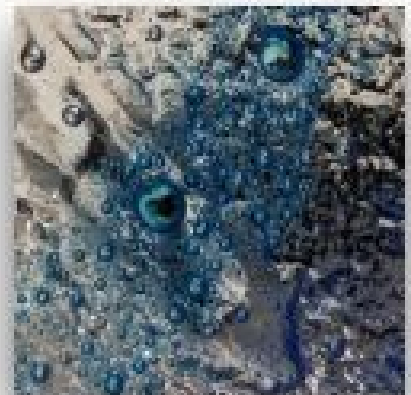
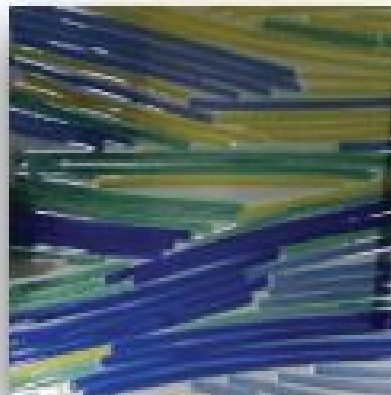
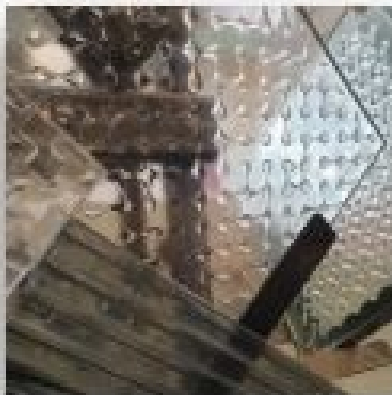
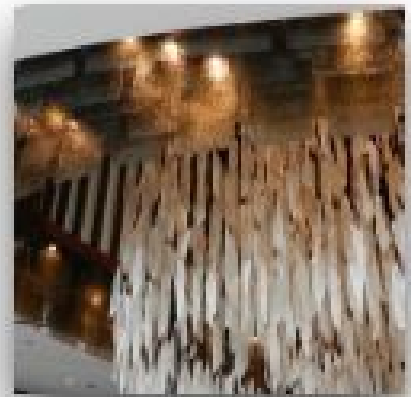
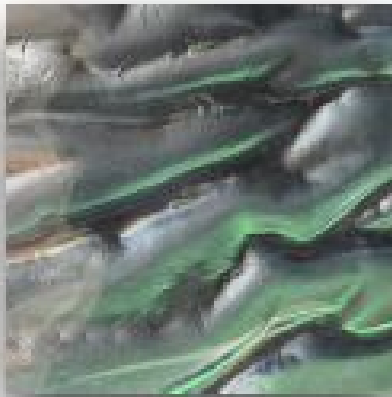
## FUSED SLUMPED AND CAST GLASS

Here, glass is melted in our furnaces to make a huge variety of different styles. Panels can either be tempered or laminated for safety - depending on the shapes produced.



3,300 Exterior louvers 27mm thick laminated with SGP. Muraba - Palm Jumeirah.

Slumped glass generally uses plain glass of a single colour, while fusing often melts various colours of glass together. We offer a selection of standard 3D patterned glasses, while specific unique moulds can be manufactured to order.



## DIGITAL CERAMIC PRINTING



Our Digital Ceramic ink-jet printer can print a very high resolution image up to an impressive size of 5 metres by 2.8 metres.

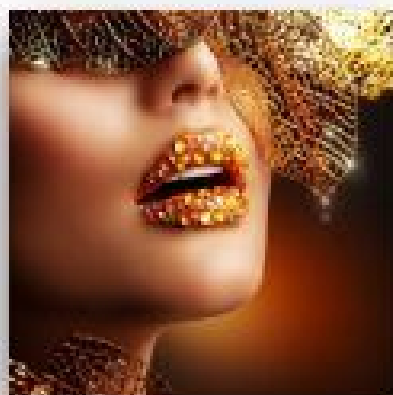
The ceramic is then fused into the glass at 680° C.

The resulting panels can be placed outside for signage, advertising etc, or used in a facade in full sunlight without fear of degradation.

**GLASTONE** is made by printing glass with precise images of stone, as a lightweight, safe, and economical alternative to actual stone.

These images can easily be book-matched.

There is virtually no limit to the types of imagery which can be permanently reproduced on glass for brilliant and exciting results.





## LAMINATED GLASS

Laminated glass is formed when two or more panels of glass are bonded together with a secure laminating film. The resulting safety glass, is held together by the interlayer, and will not fall into large dangerous separate pieces, even when broken.



Multi-laminated glass is used for load bearing steps for interior and exterior projects. We can also supply bullet resistant glass for high security projects.

Other materials may also be placed between the two or more glass panels for decorative effect. These include Fabrics, Metal meshes, Wood and stone veneers, and coatings which require protection.

Laminated glass considerably increases sound insulation compared with monolithic glass of the same thickness.

Another advantage is that the EVA lamination interlayer will reduce up to 99.9% of all UV light rays. This can be important in the protection of interior furnishings against fading from exposure to sunlight.



## BACK-PAINTED AND PRINTED GLASS



Coating of glass at Glasshouse is either by ceramic frit, or back painting. Our back painting system has been rigorously tested by Europe's top standards testing laboratory TUV Rhineland, in the Netherlands, and as a result, has been specified and used in both Dubai and Abu Dhabi Airports for thousands of square metres of wall cladding and partitions since 2006.

A combination of printing and back-painting can produce an almost unlimited variety of finishes at a reasonable cost.

There is practically no limit to the available colours that we can provide.

Low Iron glass is the best choice for White and pale colours, since the normal clear float glass is inherently slightly green.

Ideally you should select your choice of colour by looking at the colour card through a small sample of the specified glass.

Metallics and fancy finishes are available on request.



## SPECIAL FEATURES

### LIGHTING

#### CLEVELAND CLINIC MAIN LOBBY CHANDELIER



A ten metre by five metre elliptical spiral design incorporating six hundred crystal rods lit with LEDs.

Design : Michael Guy.



#### LEVEL KIDS DUBAI

A custom chandelier incorporating 72 individual Fused glass jellyfish - each with internal programmable colour changing LED lighting.

The sophisticated control program allows each unit to change colour independently from a remote console.

Design, manufacture and installation by Glasshouse



## THE UAE PAVILION - DUBAI EXPO

The UAE Pavilion at Dubai Expo is a unique building designed by Santiago Calatrava Architects, inspired by a falcon in flight. The 'feathers' comprising the roof, open to reveal the laminated tempered glass solar panels underneath, allowing the building to generate solar energy.



We produced and screen printed the glass panels with a white ceramic upper surface, with the matching lower panels printed in black.

The translucent white coating allows light to pass through, while maintaining the architect's vision of an all-white construction.

These tempered panels were laminated with solar cells by solar experts Empereal, our client and partner in this spectacular project. The curved panels were cold-bent and clipped in place.



## THE COMMERCIAL BANK OF DUBAI



This 'mosaic' feature stretches thirty six metres up the atrium of the building, depicting the history of the UAE from the days of pearl-fishing to the present day.

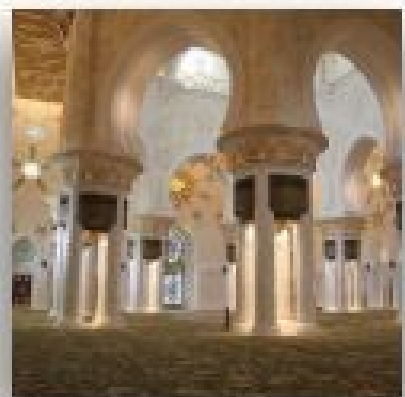
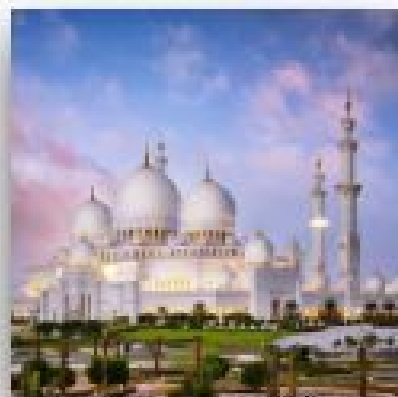
We created a stainless steel support structure between the floor slabs to hold the glass and the LED projectors needed to give the feature its overall soft lighting.

Design, manufacture and installation by Glasshouse.



## SHEIKH ZAYED GRAND MOSQUE - ABU DHABI

Glasshouse produced thousands of crystal bevels, with two and a half tons of glass mosaic pieces for the windows and doors of this world famous project.



# THE FAIRMONT HOTEL DUBAI

## THE RIVER OF LIGHT



Suspended on two opposite sides of the hotel atrium, The River of Light is a 22 metre cascade of coloured glass, and light undulating down the walls, suspended on stainless steel rods and cables, alongside the cylindrical elevators.

The twin features are illuminated by computer controlled LED projectors capable of producing light of any Pantone shade, in a continuous downward flow of changing colours. The glass, body tinted and vacuum sputter-coated with different colours is partially reflective, and partially matte finished to reflect or hold light accordingly.

Design - Michael Guy.



## SWIMMING POOL SAFETY FENCING



The UAE government is implementing regulations for the safety of children in and around swimming pools. While this is important, there is no reason why your pool area should spoil the look of your property.

Our glass barriers do not interrupt the view, and give a feeling of quality, as well as meeting the highest safety requirements. Child-proof locks and self-closing gates are integral to our designs.

Our technicians will be happy to visit your premises to make a design proposal, or alternatively we will be pleased to work with your landscape architect to find the ideal solution.



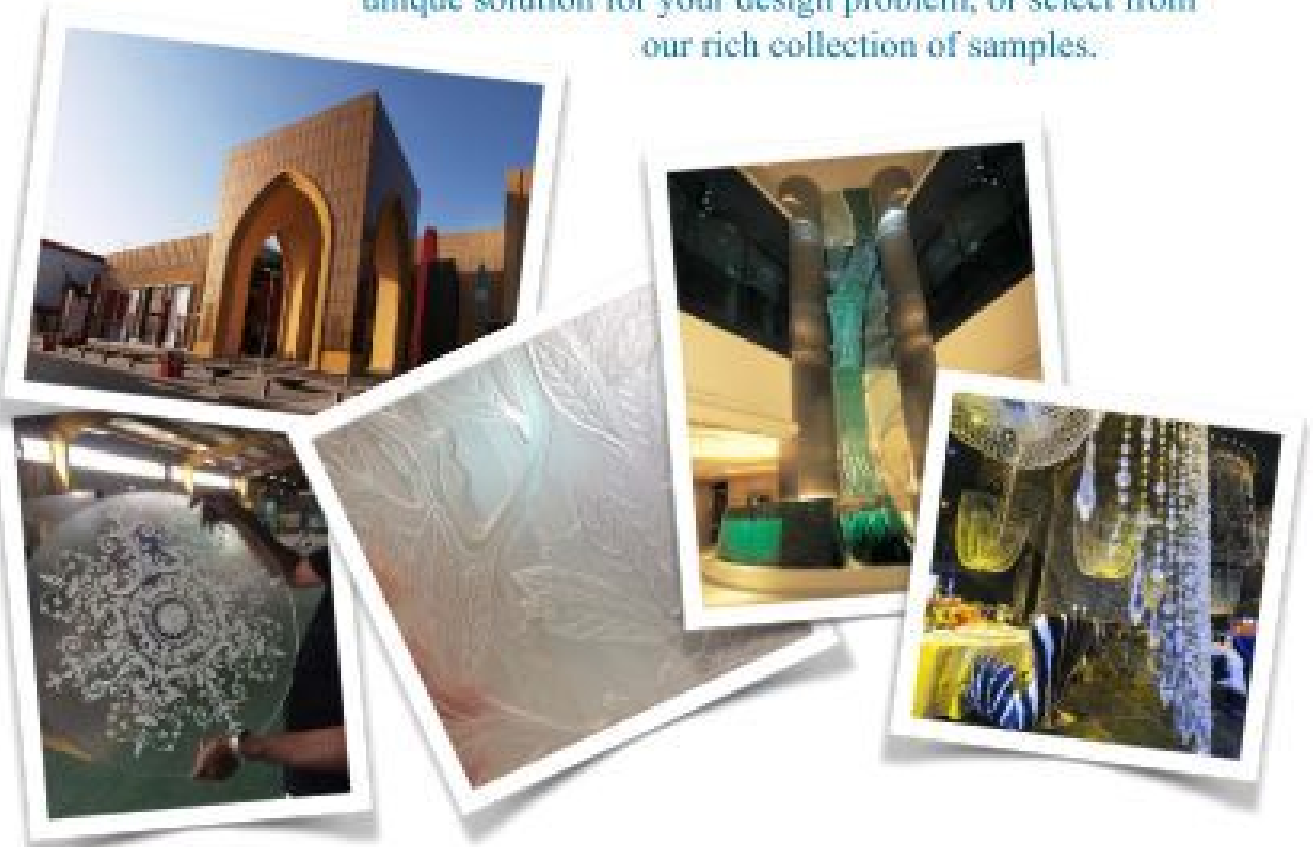
# TECHNICAL PARAMETERS

Digital Ceramic printer :	Max. size : 5m x 2.8m, Min. size 300 x 300mm. Glass thickness 4 - 19mm. Resolution up to 1400 DPI
Screen Printing :	Max size 4200 mm x 2200 mm.
Lamination (EVA, SGP) :	Max material size 5000 mm x 2500 mm
Water jet :	Max material size 4000 mm x 3000 mm
Fusing/Bending ovens :	Max glass size 3400 mm x 1800 mm

**G**lasshouse was established in 1984, and we are proud to be the first company in the UAE dedicated to the design and production of decorative and specialist glass.

With a philosophy embodying the traditional values of craftsmanship, and an eagerness to embrace the latest materials and techniques, Glasshouse has an enviable reputation for excellence and innovation. We joined the strong & versatile GIBCA group in 1992.

**T**his brochure can show only a few of the many possibilities for our work at Glasshouse. We invite you to visit our factory, where our team can better find a unique solution for your design problem, or select from our rich collection of samples.



The Glasshouse - P.O.Box 6335 - Sharjah - UAE

Tel : +971 6 5389252 email [info@glasshouseco.com](mailto:info@glasshouseco.com) Web: [www.glasshouseco.com](http://www.glasshouseco.com)